

HEALTH AND ADULT SOCIAL CARE SCRUTINY PANEL

Day: Thursday
Date: 27 July 2023
Time: 6.00 pm
Place: Committee Room 1 - Tameside One

Item No.	AGENDA	Page No
1.	APOLOGIES FOR ABSENCE	
2.	DECLARATIONS OF INTEREST To receive any declarations of interest from members of the Scrutiny Panel.	
3.	MINUTES To approve as a correct record, the Minutes of the proceedings of the Health and Adult Social Care Scrutiny Panel held on 8 June 2023.	1-2
4.	DOMESTIC ABUSE The Panel to meet Councillor Eleanor Wills, Executive Member (Population Health & Wellbeing), Debbie Watson, Director of Population Health; and Lisa Morris, Strategic Domestic Abuse Manager, to receive an update and overview regarding Domestic Abuse in Tameside.	3-22
5.	ANNUAL WORK PROGRAMMES The Panel to receive the annual work programmes for 2023/24.	23-26
6.	CHAIR'S UPDATE The Chair to provide a verbal update on activity and future priorities for the Panel.	
7.	DATE OF NEXT MEETING To note that the next meeting of the Health and Adult Social Care Scrutiny Panel will take place on Thursday 14 September 2023.	
8.	URGENT ITEMS To consider any additional items the Chair is of the opinion shall be dealt with as a matter of urgency.	

This page is intentionally left blank

Health and Adult Social Care Scrutiny Panel

8 June 2023

Commenced: 6.00pm

Terminated: 6.50pm

Present: Councillors N Sharif (Chair), Owen (Deputy), Axford, Beardmore, Drennan, Tilbrook

Apologies: Councillors Bowden, Karim, Pearce

1. DECLARATIONS OF INTEREST

There were no declarations of interest submitted by members of the Scrutiny Panel.

2. MINUTES

The minutes of the meeting of the Health and Adult Social Care Scrutiny Panel held on 9 March 2023 were approved as a correct record.

3. ROLE OF SCRUTINY

The Chair presented an update and recap on the role of Scrutiny within the wider framework of the Council.

4. ANNUAL WORK PROGRAMME

Tameside Scrutiny Panels are required to publish an Annual Work Programme of planned activity. The programme of work will cover a two-year rolling period that is to be reviewed, updated and agreed on an annual basis. Scrutiny will continue to adopt a combination of approaches to review service and performance updates, respond to formal consultations, focus reports of the Local Government and Social Care Ombudsman and areas in need of more in-depth review. This includes a responsibility for:

- Research and insight on a particular issue, including desktop reviews
- Review of decisions and recommendations
- Follow-up (from previous review / recommendations)
- Engagement and consultation – to provide responses to pre-decision activity
- Consideration of decisions and reports of the Ombudsman
- Receive updates on key issues as they arise
- Active monitoring of national and regional policy and substantive variation to services

The Chair presented a list of potential topics for the 2023/24 municipal year, with comments from members noted to inform the final document. Next step is for Overview Panel to receive the Scrutiny Work Programmes report on 1 August 2023.

Discussion followed on the priority of topics and the timetable for future meetings. Items with greatest interest were:

- Domestic abuse
- Carers
- Mental health
- Elective waiting lists

The Chair will explore options to inform a future update and review on Domestic Abuse.

Scrutiny activity will continue to take place outside of the formal meetings, with all findings and recommendations presented to the full panel for comment and approval.

5. DATE OF NEXT MEETING

To note that the next meeting of the Health and Adult Social Care Scrutiny Panel will take place on Thursday 27 July 2023.

6. URGENT ITEMS

The Chair reported that there were no urgent items for consideration at this meeting.

CHAIR

Health & Adult Social Care Scrutiny Panel

27 July 2023

Domestic Abuse Needs Assessment

Cllr Eleanor Wills – Executive Member – Population Health & Wellbeing
Debbie Watson – Director of Population Health
Lisa Morris – Strategic Domestic Abuse Manager – Population Health

Page 3

Agenda Item 4

AGENDA:

1. Recap
2. Introduction
3. Data overview
4. Domestic Abuse Needs Assessment 2021
5. Perpetrator Needs Assessment 2022
6. Domestic Abuse Strategy 2021-2026



RECAP:

- Last attended in January 2021
- Impact of Covid – increases in high risk domestic abuse and need for additional IDVA capacity
- Domestic Abuse Bill was due to be enacted bringing with it a new definition of domestic abuse and statutory requirements for LA's, specifically relating to provision of safe accommodation for those fleeing an abusive situation
- Requirement to undertake a needs assessment of domestic abuse locally, including a review of provision and gaps

Introduction

Page 6



Definition of Domestic Abuse

Behaviour of a person (“A”) towards another person (“B”) is “domestic abuse” if—
(a) A and B are each aged 16 or over and are personally connected to each other, and
(b) the behaviour is abusive.

Page 7

Behaviour is abusive if it consists of any of the following:

- physical or sexual abuse;
- violent or threatening behaviour;
- controlling or coercive behaviour;
- economic abuse
- psychological, emotional or other abuse;

and it does not matter whether the behaviour consists of a single incident or a course of conduct.

Domestic Abuse Act 2021

The new Domestic Abuse Act 2021 requires Local Authorities to:

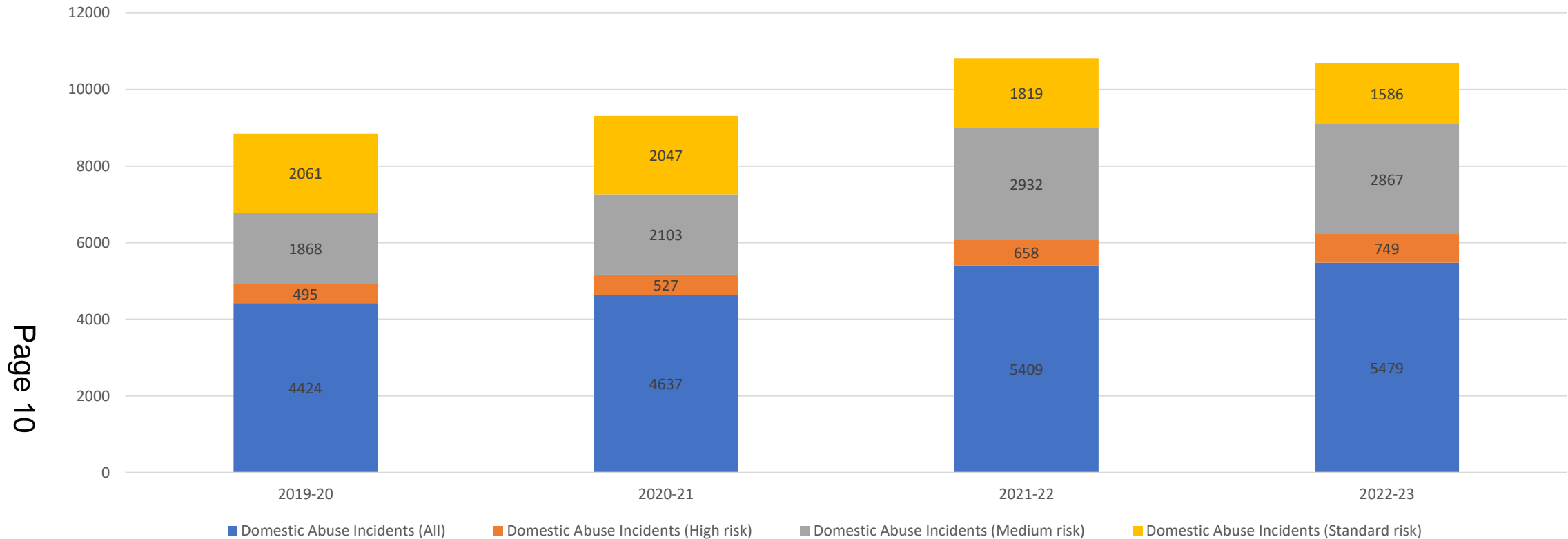
- Appoint a multi-agency Domestic Abuse Local Partnership Board which it will consult as it performs certain specified functions.
- Assess the need for accommodation-based domestic abuse support in their area for all victims or their children, including those who come from outside the area.
- Develop and publish a strategy for the provision of such support to cover their locality, having regard to the needs assessment.
- Give effect to the strategy (through commissioning / de-commissioning decisions).
- Monitor and evaluate the effectiveness of the strategy.
- Report back to central government.

Data Overview

Page 9



Domestic abuse incidents report to GMP



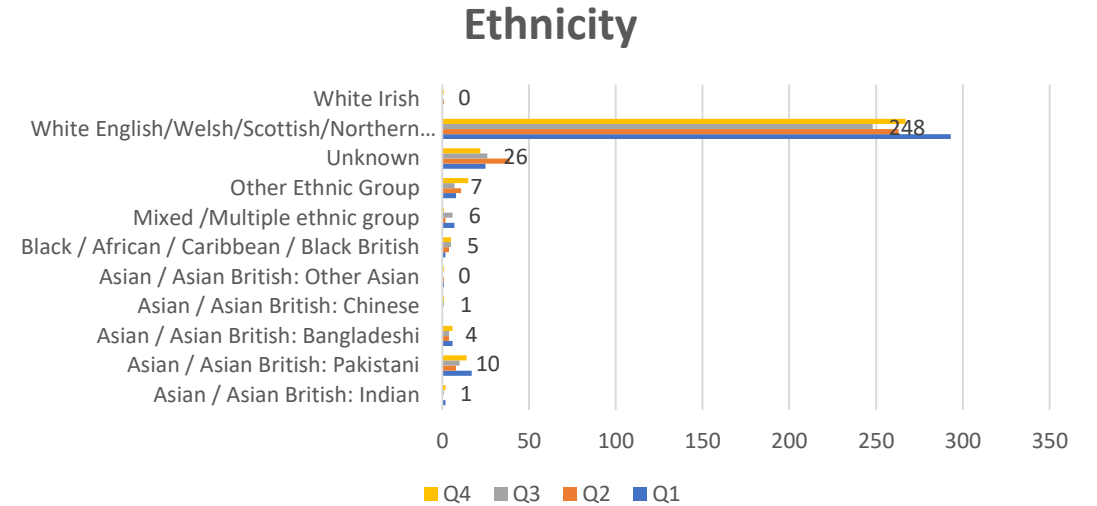
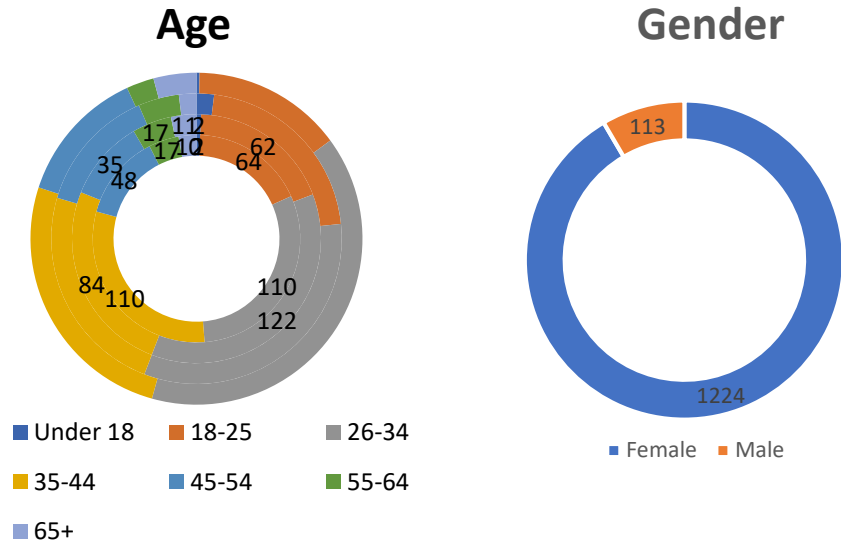
- Domestic abuse continues to be a growing issue in Tameside, with risk levels increasing
- Number of domestic abuse incidents reported to the police have increased from 4424 in 2019/20 to 5479 in 2022/23 (23.8%).
- On average 6 households present as homeless as a result of domestic abuse each week in Tameside

Domestic Abuse support – a snapshot (2022/23)

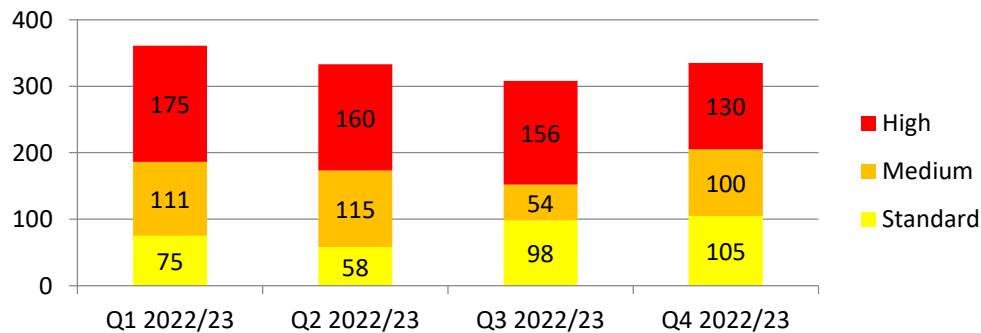
Referrals – 1337 new referrals

Refuge – 63 new referrals

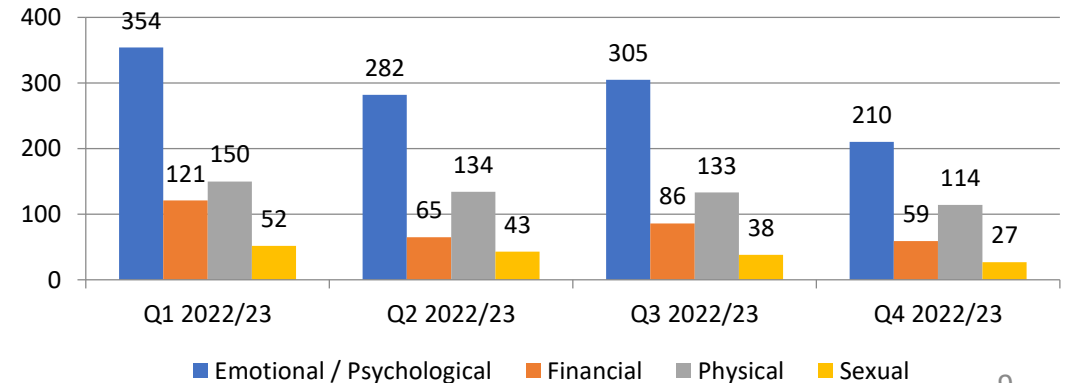
Page 11



Referrals by Risk Levels



Types of Abuse



Rates per ward 2022

Ward	Number of domestic abuse incidents in 2022	Rate per 1000 population*
Ashton Hurst	304	26.3
Ashton St Michaels	437	34.6
Ashton St Peters	615	43.9
Ashton Waterloo	315	27.1
Audenshaw	276	22.1
Denton North East	339	30.5
Denton South	328	29.9
Denton West	135	12.1
Droylsden East	302	24.5
Droylsden West	241	21.7
Dukinfield	505	39.4
Dukinfield Stalybridge	262	24.1
Hyde Godley	396	31.6
Hyde Newton	454	30.6
Hyde Werneth	228	19.6
Longdendale	319	32.0
Mossley	223	19.4
Stalybridge North	418	32.5
Stalybridge South	201	17.9
Total	6298	27.7

Page 12

GM rates 2022-23

	Bolton	Bury	Manchester	Oldham	Rochdale	Salford	Stockport	Tameside	Trafford	Wigan	GM
Total	6460	3817	13733	6319	5244	6386	4962	5663	3256	7270	63127
Average rate per 1,000 population	21.82	19.69	24.98	26.10	23.40	23.59	16.80	24.49	13.82	22.05	22.01

Domestic Abuse Needs Assessment 2021

Page 13



Key learning themes

- Tameside has a high level of reported domestic abuse. The reported rate is higher than both Tameside's closest statistical neighbours and eight points higher than the England average
- Evidence suggests a large number of incidents of domestic abuse go unrecognised where survivors might be accessing mental health support, accident and emergency and adult social care
- Professionals in Tameside are strong multi-agency workers, although there are opportunities for a stronger approach to suicide prevention, including analysis of victim/survivor needs and identification of perpetrator suicide
- Professionals repeatedly acknowledged the financial harms of domestic abuse, forced debt and high economic need
- Survivors felt there was a shortage of housing and appropriate housing advice
- Survivors reported high rates of emotional abuse and coercive control
- Survivors reported often to police and criminal justice agencies which is indicative of situations reaching crisis point and a lack of early intervention

Recommendations

1. Need for a consistent approach to data collection (particularly in relation to protected characteristics), outcomes frameworks and monitoring of impact across agencies
2. Workforce development opportunities for professionals across the Partnership include:
 1. Understanding economic abuse
 2. Domestic abuse training for housing and homelessness staff, GPs and practice staff, A&E staff, mental health professionals, midwifery services, adult and children's social care
 3. Identifying and engaging with perpetrators
3. Use of temporary accommodation for domestic abuse victims should be reviewed and changes in allocation prioritised in line with new statutory requirements
4. Gender specific communications and access points for male victims should be created
5. Routine questions from key services including GP, CAB, A&E, mental health
6. Domestic abuse should become part of the suicide prevention strategy and action plan
7. Flexibility in mental health provision for survivors of domestic abuse
8. Support for police to have a more victim-focused approach
9. Clarity on pathways to support for all professionals

Perpetrator Needs Assessment 2022

Page 16



Key learning themes

At the start of the needs assessment, it was evident that **there is currently no dedicated service or intervention for perpetrators of domestic abuse**, unless they are convicted and mandated to attend Building Better Relationships through probation or individuals pay to attend the regional Talk Listen Change programme. This is a significant gap, and our recommendations focus substantially on how Tameside could consider addressing this.

Learning Theme 1: Governance for the domestic abuse strategy in Tameside is coordinated within Public Health which enables a violence reduction approach.

Learning Theme 2: There are significant gaps in data across Tameside around perpetrators which must be improved.

Learning Theme 3: Perpetrators in Tameside appear to have a complexity of need which may make engagement in behaviour change challenging.

Learning Theme 4: Perpetrators are not being held to account through the criminal justice system.

Learning Theme 5: Housing options are limited for perpetrators which could cause risk of harm to victims.

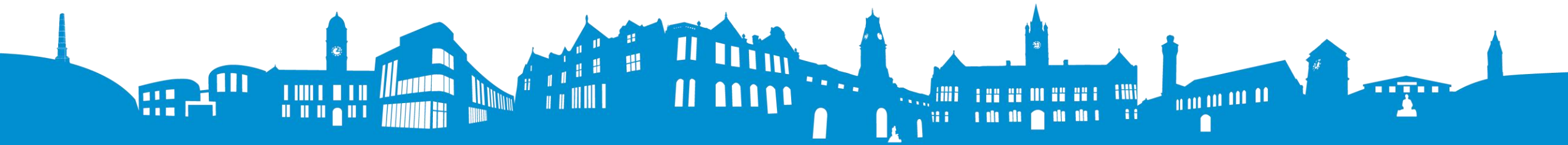
Learning Theme 6: There is a considerable gap in the confidence, knowledge and skill across the frontline workforce in knowing how to respond to perpetrators

Recommendations

1. Response to perpetrators should be embedded within a wider Public Health approach which takes a whole system view
2. Conduct an audit of perpetrator data held by all services with a recommendation to improve quality and create a perpetrator dashboard
3. Conduct a training needs assessment or review existing training around domestic abuse and complex needs to identify opportunities to create a new training offer around perpetrators
4. Substance use, mental health and homelessness services should audit their assessment processes to ensure they're robust in identifying, sharing information and working with perpetrators
5. Develop a whole person DA perpetrator risk assessment toolkit and promote across all agencies
6. Explore the use of positive requirements and injunctions to mandate perpetrators to access interventions
7. Housing and homelessness services should develop a protocol for housing perpetrators of domestic abuse, which should align to the Whole Housing Approach and include both enforcement and support
8. Following the development of a training offer the outcomes and impact should be regularly reviewed

Domestic Abuse Strategy 2021-2026

Page 19



Domestic Abuse Strategy 2021-2026

Page 20

Make Domestic Abuse everybody's business

Create Safe Spaces for Disclosure

Meet the needs of victims through local services

Help victim-survivors stay safe at home

Secure better outcomes for children impacted by domestic abuse

Identify problem behaviours early

Hold perpetrators accountable

Culture & Governance	Operational
Domestic Abuse Steering Group	Perpetrator task and finish group
Trust Group – Lived experience	Domestic Abuse Data Dashboard
White Ribbon Accreditation	MARAC Review
Moving towards a Co-ordinated Community Response Model	Workforce Development & Communications Strategy
Recommissioning of Domestic Abuse Support Services	Wider work on Violence Against Women & Girls (VAWG)

This page is intentionally left blank

SCRUTINY ANNUAL WORK PROGRAMMES 2023/24

1. INTRODUCTION

- 1.1 Tameside Scrutiny Panels are required to publish an Annual Work Programme of planned activity for the municipal year ahead. The programme of work will cover a two-year rolling period to be reviewed, updated and agreed on an annual basis.
- 1.2 Scrutiny activity aims to reflect priority issues across the Council and external partners. Work will continue to improve the flexibility, responsiveness and reporting methods of all scrutiny activity undertaken during 2023/24. Discussion from Scrutiny Panels held in June 2023 has directly informed the list of topics and planned updates 'check and challenge', for the year ahead.
- 1.3 Each year a range of emerging topics and issues may require the attention of Scrutiny. It is therefore important to ensure efforts are best placed to support and influence effective decision-making, with a focus on improving outcomes for residents and communities.

Scrutiny activity in Tameside

- 1.4 There is a range of options available to each Scrutiny Panel as to how activity is planned and undertaken. Scrutiny Chairs will work closely with panel members in order to adopt a combination of approaches to review service and performance updates, respond to formal consultations, focus reports of the Local Government and Social Care Ombudsman and areas in need of more in-depth review. This includes a responsibility for:
 - Research and insight on a particular issue, including desktop reviews
 - Review of decisions and recommendations
 - Follow-up (from previous review / recommendations)
 - Engagement and consultation – to provide responses to pre-decision activity
 - Consideration of decisions and reports of the Ombudsman
 - Receive updates on key issues as they arise
 - Active monitoring of national and regional policy and substantive variation to services
- 1.5 The work programme is ambitious and it is not expected that all topics will be covered during the year, but more an agreed list from which to select items. Scrutiny will remain mindful of budget pressures, regulatory frameworks and the demand on statutory services. Through each work programme, the scrutiny of key partners will be planned where appropriate and relevant. At times, Scrutiny may also consider work and outcomes associated with individual delivery panels of the Executive.
- 1.6 In addition to the work programme, all panel members will continue to receive a regular update email to inform of upcoming activity, access to scrutiny resources, engagement and consultation with regard to local, regional and national decision-making. This provides a direct opportunity for scrutiny members to contribute and respond to the range of activity taking place both within the Council and across partners.

2. WORK PROGRAMMES

- 2.1 The Scrutiny meetings held in June 2023 provided members with the opportunity to comment and contribute to the list topics included in the annual work programmes.
- 2.2 Scrutiny activity will continue to be undertaken outside of the formal meetings and through working groups, with all findings and recommendations presented to the full panel for comment and approval. This flexibility can allow responsive and timely work to be undertaken, creating an enhanced opportunity to both influence and inform the impact of

decisions. It is also necessary to monitor and evaluate outcomes from past activity and to review the implementation of recommendations.

- 2.3 Where deemed appropriate, the wider development of scrutiny may include project support and service development work undertaken at the request of the Executive as a critical friend.

Planned activity

- 2.4 In order to prevent delay, Scrutiny Panels agreed topics to be considered at the next round of public meetings in July, as detailed below.

Place and External Relations Scrutiny Panel – 25 July 2023

- Neighbourhood Enforcement

Children’s Services Scrutiny Panel – 26 July 2023

- Services for Care Leavers

Health and Adult Social Care Scrutiny Panel – 27 July 2023

- Domestic Abuse

- 2.5 On occasion a topic may require the attention of more than one scrutiny panel in order to examine a range of impacts. At such a time, a decision will be made to assign a lead panel based on both remit and the subject matter. All aspects of activity will be made available to panel members to consider and respond.

3. SCRUTINY ANNUAL WORK PROGRAMMES 2023/24

- 3.1 The work programmes below capture the input and discussion of panel members from meetings held in June 2023. The list of topics does not reflect the order in which activity will be selected or undertaken.

Place and External Relations Scrutiny Panel

- 3.2 The Scrutiny Panel recognises that topics specific to growth, investment and regeneration may be closely linked and best considered in conjunction with others.

Place and External Relations Scrutiny Panel	
•	Neighbourhood Enforcement – policy and the effectiveness of strategic, operational and place-based approach to fly tipping, street scene/cleanliness and parking etc
•	GMP – implementation of the neighbourhood model / Community Safety Partnership
•	Transport for Greater Manchester – Rochdale-Oldham-Tameside Bus Transit programme and emerging public and active travel schemes
•	Housing / Registered Provider Partnership – coordination update to include housing partners around homelessness strategy and accommodation
•	Town Centres – consultation / development and delivery phases
•	Local Plan – Places for Everyone (strategic <u>not</u> operational planning)
•	Poverty / cost of living and vulnerability – cross cutting and strategic response
•	Climate change actions / Environment Strategy implementation
•	Access to work – NEET / Routes to Work / vulnerability
•	The Panel to receive regular updates during the year regarding new and emerging areas
Follow-up on past activity	
•	Homelessness and housing

Children’s Services Scrutiny Panel

- 3.3 The Scrutiny Panel will undertake core assurance activity across improvement activity, to include:
- Children’s Social Care Improvement Plan
 - Safeguarding Partnership
 - Ofsted activity and reports

Children’s Services Scrutiny Panel
• Children’s Social Care Improvement Plan / Ofsted Monitoring
• Effectiveness of services and support to care leavers
• Quality and consistency of social work practice / voice of the child / timeliness of plans and assessments across the service
• Development of the Adolescence Hub – Youth Services and provision
• Mental health support / assessment (incl. CAMHS)– crisis and ongoing
• Child exploitation – joint commissioning and intervention activity
• Education <ul style="list-style-type: none"> - Schools / education investment areas – future vision and pathway - Impact of Covid-19 on transition
• SEND – NHS investment
• The Panel to receive regular updates during the year regarding new and emerging areas
Follow-up on past activity
• Children’s Workforce Strategy – social worker recruitment and retention

Health and Adult Social Care Scrutiny Panel

- 3.4 The Scrutiny Panel will undertake core assurance activity with health partners during the municipal year and receive timely briefings, to include: CQC inspection framework
- GMIC model
 - Tameside & Glossop NHS Integrated Care Foundation Trust
 - Pennine Care NHS Mental Health Foundation Trust

Health and Adult Social Care Scrutiny Panel
• Mental Health pathway – crisis support and ongoing secondary care – Pennine Care discharging Care Act duties
• Domestic Abuse (JSNA)
• Tameside Carers – assessment and support for unpaid carers (Health and Care Act 2022)
• Strategy development – input to emerging strategies – e.g. Adults Social Care; and Carers
• Learning disabilities – living at home model – offer and focus on journey, support and outcomes for service users (inc. accommodation). Engagement – Big Chat
• Adult Social Care - Market Position Statement (capacity and demand)
• Tameside Provider Partnership (TPP) / GM Integrated Care (GMIC) – incl. GM, ICFT, Primary Care and TMBC reps.
• Health inequalities – improvement and prevention programmes
• Access to GP appointments (incl. Primary Care Access Service)
• Elective waiting lists – post Covid-19 impact on waits
• Access to Dental Services
• The Panel to receive regular updates during the year regarding new and emerging areas

In-year monitoring

3.5 Each Scrutiny Panel will plan and undertake additional oversight and in-year monitoring, to include the following activity.

Additional in-year monitoring
• Budget updates – annual and mid-year
• Feedback and learning from complaints (LGSCO)
• Performance monitoring against corporate priorities (incl. Children’s Social Care)